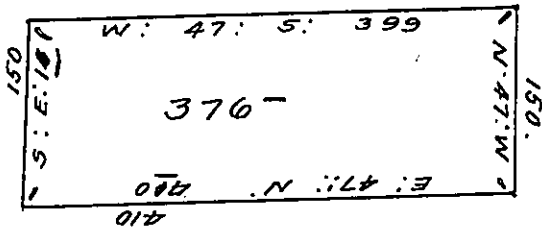


Hugh Griffith

Hugh's Land



Pursuant to a Warrant from the Commissioners of Property directed unto me bearing date the 29th day of the 7th mo^o Last. I do hereby Certify that I have Resurveyed to Hugh Griffith a Certain Tract of Land in the County of Philadelphia in the Township of Gwynedd beginning at a Stake being a Corner of Robert Evans Land, from thence by a Line of Marked trees and the same Land East ⁴⁷ degrees North 410 perches to a Stake set in the ground in Joseph Fishers Line, from thence by the said Line of marked trees South East 150 perches to a Stake set in the ground, from thence by a Line of Marked trees deviding it from John Hugh Land West 47 degrees South 399 perches to a Stake set in the ground, from thence by a Line of Marked trees deviding it from Ellis Davids Land North 47 degrees West 150 perches to the place of beginning. Containing 376 acres of Land and is according to the bounds above described. Return'd into the General Surveyors Office at Philadelphia the 21st day of the 10th mo^o 1702.

Pr. David Powell.

IN TESTIMONY that the above is a copy of the original remaining on file in the Department of Internal Affairs of Pennsylvania, made conformably to an Act of Assembly approved the 16th day of February, 1833, I have hereunto set my Hand and caused the Seal of said Department to be affixed at Harrisburg, this ninth day of December 1909.

Henry Houck
Secretary of Internal Affairs.